

CITIZEN

Top of the class

More features for reliable printing



CT-S601II
(available in black or white)

LED operation panel

The three color LED indicates the printer's status, types of errors and messages.

Toolfree maintenance

Paper jam? No problem for the CT-S601II. One hand grip and the cutter is released automatically. No tool is needed. Even if the longlife cutter ever needs to be exchanged, Thanks to it's Snap-In design this only takes 30 seconds.

Internal Power Supply

The CT-S601II POS printer from Citizen offers an internal power supply.

CITIZEN CT-S601II

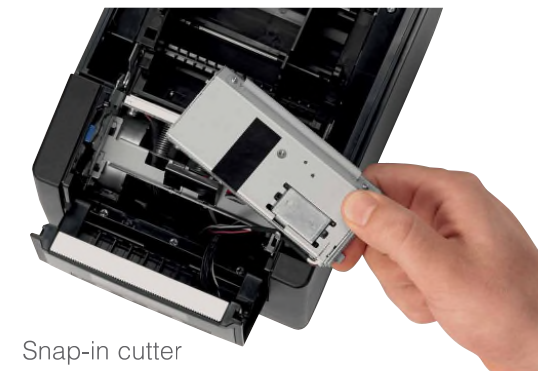
POS

Applications

- Receipt
- Coupon
- Ticket
- Daily Report
- Kitchen
- Delivery slip
- Barcode
- Weigh scales
- Kiosk
- Queue management



Operation panel



Snap-in cutter

CITIZEN

Specifications

| Model | CT-S601II | |
|--------------------------|---|--|
| Printing method | Line thermal dot printing | |
| Printing width | 280mm/640 dots, 72mm/576 dots, 64mm/512 dots, 54.5mm/436 dots, 54mm/432 dots, 52.5mm/420 dots, 48mm/384 dots, 45mm/360 dots, 48.75mm/390 dots, 68.25mm/546 dots | |
| Dot pitch | 8 x 8 dots/mm (203 dpi) | |
| Printing speed | Max. 220mm/s (print density 100%), 1600 dot-lines/s | |
| Number of columns | 83mm paper: Font A – 53, Font B – 71, Font C – 80, 80mm paper: Font A – 48, Font B – 64, Font C – 72, 60mm paper: Font A – 36, Font B – 48, Font C – 54, 58mm paper: Font A – 35, Font B – 46, Font C – 52 | |
| Character size | Font A: 1.50 x 3.00mm (12 x 24 dots), Font B: 1.13 x 2.13mm (9 x 17 dots), Font C: 1.00 x 2.00mm (8 x 16 dots) | |
| Character table | Alphanumeric, international, PC437/850/852/857/858/860/863/864/865/866/WPC1252/katakana/Thai code 18 | |
| Barcode type | UPC-A/E, JAN-13/8, Code 39, Code 128, CODABAR, Code 93, PDF417, QR Code | |
| Logo registration/print | 384 KB (capable of storing user-defined characters and logos) | |
| Line spacing | 4.23mm (1/6 inch), can be set by command | |
| Paper | Width | 83mm/80mm/60mm/58mm (all +0/-1mm) |
| | Diameter | maximum 83mm |
| | Thickness | 65-75µm (core tube diameter: inner 12mm/outer 18mm) 75-150µm (core tube diameter: inner 25.4mm/outer 32mm) |
| | Recommended Paper | TF-50KS-E-2D from Nippon Paper, PD150R or PD160R from Ohji Paper, PA220AG, HP220A, HP220AB-1, F230AA, P220AB, or PB670 (2-color paper) from Mitsubishi Paper |
| Interface | Serial (RS-232C compliant, parallel (IEEE 1284 compliant)), USB, USB with hub, Ethernet, Wireless LAN (Wifi), powered USB, Bluetooth | |
| Input buffer | 4K bytes/45 bytes | |
| Drawer kick-out | 2 drawers | |
| Operation panel | 3 LED's, Feed button | |
| Power supply | Input: AC 100 to 240V, 50/60 Hz, 150 VA, Output: DC 24, 2.1 A | |
| Weight | CT-S601IIS: Approx. 2 kg, CT-S601IIA: Approx. 1.6 kg | |
| Dimensions (W x D x H) | CT-S601IIS: 145 x 192 x 148 mm, CT-S601IIA: 145 (W) x 192 (D) x 120 (H) mm | |
| Operating environment | 5 to 45°C, 10 to 90% RH (no condensation) | |
| Storage environment | -20 to 60°C, 10 to 90% RH (no condensation) | |
| Reliability | Print head life: 150km, 200 million pulses (at normal temperature and humidity using recommended paper), Auto cutter life: 2 million cuts (at normal temperature/humidity, using recommended paper and paper thickness) | |
| EMC and safety standards | UL, C-UL, FCC Class A, TUV-Bauart, CE Marking, VCCI, CCC, BIS | |
| Warranty | 2 years for Printer | |

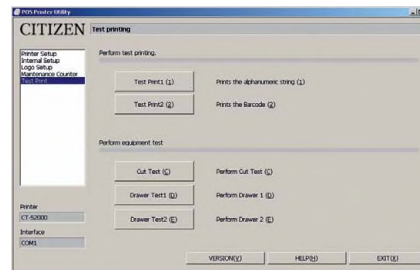
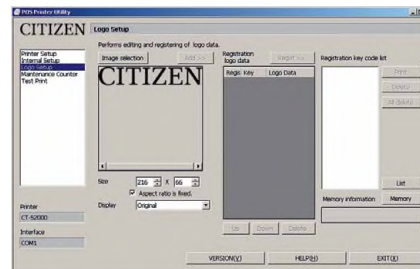
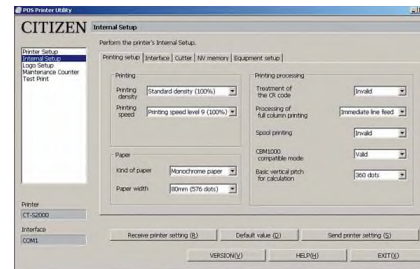
Accessories/ Interface Connections

- Serial IF1-RS01
- Parallel IF1-PA01
- USB IF1-UB01
- Powered USB IF1-PU01
- USB incl. USB hub IF1-HU01
- Ethernet (Standard) IF1-ET01



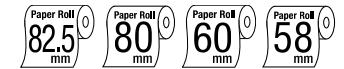
Exchangeable interfaces

Customization Software



CITIZEN CT-S601II

POS



Features & Benefits

- 220mm / sec high-speed printing
- 82,5/80/60/58 mm selectable paper width
- Easy paper loading
- Auto retracting Cutter (full/partial)
- Snap-in cutter
- Operation panel with 3 LED's and feed button
- Built-in buzzer
- Top paper exit
- Paper roll capacity Ø 83mm
- Exchangeable interface cards
- Built-in AC adaptor
- Cash drawer kick-out
- Bitmap registration (NV memory)
- Barcode printing
- ESC/POS compatibility
- Page mode
- Two color printing
- Smoothing fonts
- Availalbe in white, black or dark grey (option)
- Driver: Win2000/XP/Vista/2003 Server, OPOS, Java POS, CUPS
- Utility software: Printer customization software, Receipt Layout Designer

All product names are trademarks of the respective manufacturers. Epson® and ESC/POS™ are trademarks or registered trademarks of Seiko Epson Corporation. Designs, specifications and availability are subject to change without notice. Errors and omissions excluded.

Type Classification

CT-S601IIS 3 RS E BK P
1) 2) 3) 4) 5) 6) 7)

- | | | | | |
|---|---|--|---|--|
| 1) Model type CT-S601II | 2) Power supply DC: No power source S: Built-in power supply type A: AC adaptor type | 3) Paper width 3: 3 inch (80/83 mm) 2: 2 inch (58/60 mm) | 4) Interface PA: Parallel RS: Serial RS-232C UB: USB only UH: USB with hub BT: iOS & Android / Bluetooth | ET: Ethernet (Compact type) ES: Ethernet (Premium type) UP: Powered USB WF: Wireless LAN (Compact type) |
| 5) Market: J: Japanese E: Europe/Asia U: North America C: China | 6) Body case color WH: White BK: Black GR: Gray | 7) PNE sensor No P: PNE sensor | | |